

UNIVERSITI SAINS MALAYSIA

WE LEAD



International
Mobility &
Collaboration Centre



ABOUT PENANG

The state of Penang on Malaysia's Northwest Coast lies at the crossroad of Asia's major civilisations and has sparked visitors' imaginations for centuries. From awe-inspiring architecture, non-stop shopping, and mouth-watering cuisine. Penang is a place with an authentic taste of the real Asia, where it is woven into a tapestry of culture, heritage and natural beauty.

A perfect blend of East and West, Penang has accepted modernity gracefully while maintaining the heritage and tradition. This wonderful state in Malaysia is situated on the northwest coast of the Malaysian Peninsula and is one of the top tourist destinations in Asia. Penang is the second smallest state in the country with the capital of the state being George Town.

Penang has it all: rich history, fun beaches, beautiful resorts, diverse culture, and delicious food. Every year, thousands of visitors come here to experience the unique cultural heritage and scenery. It is also a very cosmopolitan city, perhaps the second busiest in the country after Kuala Lumpur.

The island occupies an area of 285 square kilometres. The state also encompasses Province Wellesley (Seberang Perai), a strip on the mainland. The island is separated from the mainland by a channel three kilometres wide at the narrowest point. The Penang Bridge (13.5km) - completed in August 1985, Penang Second Bridge (24km) - completed in March 2014 as well as Ferry services link the island to the mainland

ABOUT USM

Founded in 1969, Universiti Sains Malaysia (USM) is the second oldest public institution of higher learning in Malaysia. The university is divided into six campuses with its Main Campus and Sains@USM located on the Penang Island. Its five other branch campuses are Health Campus located in Kubang Kerian, Kelantan (approximately 300km from the main campus), Advanced Medical and Dental Institute (IPPT) in Bertam, Engineering Campus in Nibong Tebal, and Institute of Postgraduate Studies (IPS KL) in the heart of the capital city, Kuala Lumpur. An offshore medical programme campus, KLE-Belgaum is located in India.

USM offers a vast variety of undergraduate and post-graduate programmes, which have so far attracted students from more than 115 countries all over the world. USM offers courses ranging from Natural Sciences, Applied Sciences, Medical and Health Sciences, Pharmaceutical Sciences to Building Science and Technology, Social Sciences, Humanities, and Education.

Since the beginning, USM has adopted the School system rather than the traditional Faculty system, to ensure that its students are multi-disciplined from their exposure to other areas of study by other Schools. It also encourages students to be active in extra-curricular activities given the myriad of clubs and societies available.



**OUR
MISSION
AND
VISION**



V

VISION

Transforming Higher Education
for a Sustainable Tomorrow

M

MISSION

USM is a pioneering, transdisciplinary
research intensive university that
empowers future talents and enables the
bottom billions to transform their socio-
economic well-being.

V

VALUE

- Quality
- Equality
- Availability
- Accessibility
- Affordability
- Appropriateness

CAMPUS LOCATION



KLE CAMPUS
BELGAUM, INDIA



**ADVANCED MEDICAL AND
DENTAL INSTITUTE**
BERTAM, PENANG MAINLAND



MAIN CAMPUS
MINDEN, PENANG ISLAND



ENGINEERING CAMPUS
NIBONG TEBAL, PENANG MAINLAND



SAINS@USM
BUKIT JAMBUL, PENANG ISLAND



HEALTH CAMPUS
KUBANG KERIAN, KELANTAN



USM SAINS@KL
KUALA LUMPUR



SCHOOLS IN USM

MAIN CAMPUS

- SCHOOL OF HOUSING, BUILDING AND PLANNING
- SCHOOL OF INDUSTRIAL TECHNOLOGY
- SCHOOL OF PHARMACEUTICAL SCIENCES
- SCHOOL OF COMPUTER SCIENCES
- SCHOOL OF EDUCATIONAL STUDIES
- SCHOOL OF MANAGEMENT
- SCHOOL OF COMMUNICATION
- SCHOOL OF THE ARTS
- SCHOOL OF LANGUAGES, LITERACIES AND TRANSLATION
- SCHOOL OF HUMANITIES
- SCHOOL OF SOCIAL SCIENCES
- SCHOOL OF BIOLOGICAL SCIENCES
- SCHOOL OF CHEMICAL SCIENCES
- SCHOOL OF MATHEMATICAL SCIENCES
- SCHOOL OF PHYSICS
- SCHOOL OF DISTANCE EDUCATION
- GRADUATE SCHOOL OF BUSINESS (GSB)
- INSTITUTE OF POSTGRADUATE STUDIES

HEALTH CAMPUS

- **SCHOOL OF DENTAL SCIENCES**
- **SCHOOL OF HEALTH SCIENCES**
- **SCHOOL OF MEDICAL SCIENCES**

ENGINEERING CAMPUS

- **SCHOOL OF AEROSPACE ENGINEERING**
- **SCHOOL OF CHEMICAL ENGINEERING**
- **SCHOOL OF CIVIL ENGINEERING**
- **SCHOOL OF ELECTRICAL & ELECTRONIC ENGINEERING**
- **SCHOOL OF MECHANICAL ENGINEERING**
- **SCHOOL OF MATERIALS & MINERAL RESOURCES ENGINEERING**

USM – KLE INTERNATIONAL MEDICAL PROGRAMME

The School of Medical Sciences, Universiti Sains Malaysia (USM) introduced its medical programme in 1979. 30 years later, USM has established an offshore programme in Belgaum, India in collaboration with Karnataka Lingayat Education (KLE). This offshore 5 year M.D programme is conducted at KLE University Campus in Belgaum, India. Upon completion of their studies, students will be awarded a medical degree. This is a locally accredited USM Medical Degree Program conducted overseas and is customised to the needs of the medical career in Malaysia.



THE DEPARTMENTS IN USM-KLE IMP

PRE- CLINICAL	PARA- CLINICAL	CLINICAL	ALLIED	LANGUAGES	OTHERS
<ul style="list-style-type: none">• Anatomy• Physiology• Chemical Pathology (Biochemistry)	<ul style="list-style-type: none">• Pathology• Microbiology• Pharmacology• Community Medicine• Behavioral Science	<ul style="list-style-type: none">• Surgery• Medicine• Obstetrics & Gynecology (ONG)• Pediatrics• Radiology• Orthopedics• Anesthesiology• Psychiatry• ENT• Ophthalmology• Family Medicine	<ul style="list-style-type: none">• Physiotherapy• Nursing	<ul style="list-style-type: none">• English• Kannada• Bahasa Malay	<ul style="list-style-type: none">• Titas• Entrepreneurship• Co-Curriculum



RESEARCH CENTRES IN USM

APPLIED SCIENCES

- Analytical Biochemistry Research Centre (ABrC)*
- Centre for Global Sustainability Studies (CGSS)*
- National Advanced IPv6 Centre (NAv6)*
- Computer Translation Unit*
- Malaysian Institute of Pharmaceuticals and Nutraceuticals*
- National Poison Centre**
- Centre for Drug Research**

APPLIED ARTS

- Basic Education Research Unit (BERU)*
- Centre for Instructional Technology and Multimedia*
- National Higher Education Research Institute (IPPTN)*

PURE ARTS

- Centre for Global Archaeological Research*
- Centre for Policy Research and International Studies (CenPRIS)*
- Centre for Research on Women and Gender (KANITA)*
- Centre for Education, Training and Research in Renewable Energy and Energy Efficiency (CETREE)*
- Centre for Islamic Development Management Studies (ISDEV)*
- Research and Education for Peace (REPUSM)*

PURE SCIENCES

- Centre For Chemical Biology (CCB)*
- Centre For Marine & Coastal Studies (CEMACS)*
- Vector Control Research Unit (VCRU)*
- Astronomy & Atmospheric Science Research Unit*

MEDICAL

- Advanced Medical & Dental Institute (AMDI)*
- Human Genome Centre*
- Institute for Research in Molecular Medicine (INFORMM)**

ENGINEERING

- Centre for Engineering Excellence (CEE)*
- Collaborative Microelectronic Design Excellence Centre (CEDEC)*
- Science & Engineering Research Centre(SERC)*
- Institute of Nano Optoelectronics Research and Technology (INOR)*
- River Engineering and Urban Drainage Research Centre (REDAC)**

Note: * COE (Centre of Excellence)

** HiCOE (Higher Education Centre of Excellence)

FACILITIES AND SERVICES IN USM

SERVICE CENTRES



**PUSAT
SEJAHTERA**



**CENTRE FOR
INSTRUCTIONAL
TECHNOLOGY
AND MULTIMEDIA**



**CENTRE FOR
KNOWLEDGE,
COMMUNICATION &
TECHNOLOGY**



**DEWAN
BUDAYA**



**HAMDAN
TAHIR
LIBRARY**



**HAMZAH
SENDUT
LIBRARY**



**ISLAMIC
CENTRE**



**TUANKU FAUZIAH
MUSEUM &
GALLERY**



USM PRESS



**INTERNATIONAL
MOBILITY &
COLLABORATION
CENTRE**



**CENTRE FOR
RESEARCH ON
WOMEN & GENDER**

ACADEMIC PROGRAMMES

Universiti Sains Malaysia welcome those who are interested to be part of the campus citizenry. In line with this, a variety of academic programmes tailored to meet current market needs are on offer. In total, there are 61 programmes offered for undergraduate while more than 300 academic programmes are offered for postgraduate.

THE ACADEMIC PROGRAMME STRUCTURE OFFERED AT USM IS DIVIDED INTO 4 CATEGORIES, NAMELY :



**UNDERGRADUATE
STUDY PROGRAMME**



**POSTGRADUATE
PROGRAMME**



**DISTANCE LEARNING
PROGRAMME**



**EXCHANGE STUDENT
PROGRAMME / STUDY
ABROAD PROGRAMME**

**ACADEMIC SESSION IN USM:
SEMESTER 1 (FALL SEMESTER) : OCTOBER - FEBRUARY
SEMESTER 2 (SPRING SEMESTER): MARCH - AUGUST**

OTHER FACILITIES



TUANKU FAUZIAH MUSEUM & GALLERY

An impressive Tuanku Fauziah Museum & Gallery filled with world-class display and a state-of-the-art Art Gallery with fine art pieces.



LECTURE THEATRE AND HALLS

Lecture theatre and halls to facilitate in class teaching and learning.



VARIOUS SHOPS

Banks, bookshop, pharmacy, post office and retail outlet to cater to the needs of student and staff.

Donate
Books
Here

Donate
Books
Here

AND RESOURCES

HAMZAH SENDUT LIBRARY

An outstanding research library of over one million items and an extensive network of electronic residences to accommodate their stay on campus.



SPORTS CENTRE

Equipped with indoor and outdoor facilities to cater for students' and staff's sports event.



CAFETERIAS AND CAFES

Warm and cozy cafeterias and well-designed pavilions.



ON-CAMPUS ACCOMODATIONS

• MAIN CAMPUS •



**DESASISWA
AMAN DAMAI**



**DESASISWA
BAKTI FAJAR
PERMAI & PETAS**



**DESASISWA CAHAYA
GEMILANG
HARAPAN**



**DESASISWA
INDAH KEMBARA**



**DESASISWA
RESTU**



**DESASISWA
SAUJANA**



**DESASISWA
TEKUN**



**INTERNATIONAL
HOUSE**

ON-CAMPUS ACCOMODATIONS

• ENGINEERING CAMPUS •



**DESASISWA JAYA
LEMBARAN UTAMA**

• HEALTH CAMPUS •



**DESASISWA
MURNI NURANI**

OFF-CAMPUS ACCOMODATIONS

Students may select a variety of accommodation available which are situated outside of the campus. Students who are staying outside of the campus are automatically registered under the Students Without Hostel Association (PETAS) where their well-being is taken care of. The frequent places international students would choose for off-campus accommodation : **E-Park, N-Park, Sunny Ville, Ivory, Universiti Heights and Raffel Village**. All establishments are within walking distance from the campus. They are also strategically located as follows:

APPROXIMATELY 8.5 KM TO PENANG INTERNATIONAL AIRPORT
APPROXIMATELY 9.0 KM TO WELD QUAY (PENANG JETTY)
APPROXIMATELY 10.5 KM TO GEORGETOWN (CITY CENTRE)
APPROXIMATELY 2.0 KM TO SG NIBONG BUS TERMINAL

ACCOMODATION SURROUNDING THE MAIN CAMPUS



E-PARK



N-PARK



SUNNY VILLE



IVORY



UNIVERSITI HEIGHTS



RAFFEL VILLAGE

CAMPUS LIFE

USM provides various sporting facilities such as archery range, cricket, football field, badminton courts, tennis courts, hockey courts, rugby field, softball, squash courts, and basketball courts. Other activities include cultural activities, leadership programmes, community service programme, and excellence programme with the cooperation of the Student Advisory and Development Unit, the Sports Unit, the Arts and Cultural Development Unit, and Hostel Management.

Cultural events/activities are organised to foster closer ties among students. There are also various clubs and societies that cater to a wide array of interest. These include the Political Science Society, Computer Science Club, Indian Cultural Club, Navigator Society, Astronomy Club, Debating & Public Speaking Club, and Mass Communication Club to name a few. The Counselling Unit at USM offers support service to help develop students' potential and capabilities.

Activities are realised through societies, clubs, sports and cultural activities, motivation workshops, and debate competitions. There are annual activities such as forums, workshops, and programmes in conjunction with the National Day celebrations such as the Ambang Merdeka Night and the Merdeka Campus Walk.



SHORT TERM AND STUDY PROGRAMMES

SHORT TERM AND STUDY PROGRAMMES

The short-term programme is tailor-made to cater to the needs of our partner universities for mobility events in a short period of time. Under this programme, International Mobility and Collaboration Centre (IMCC) can plan a credit transfer programme or non credit programme to suit your interests. Summer Programmes at USM, brimming with cultural activities, will allow you to explore Malaysia in all its diverse beauty. The following are a few examples of the programmes:

- **BIODIVERSITY SHORT PROGRAMME**
- **ARCHITECTURE AND MALAYSIA STUDY PROGRAMME**
- **TROPICAL DATA SCIENCE SCHOOL**

BIODIVERSITY SHORT PROGRAMME

(2 WEEKS)

This programme exposes participants to the essence of Malaysia within the two-week stay in Penang. The participants will get to explore the tropical biodiversity and experience the complexity and beauty of some of the most biologically diverse and threatened ecosystems in the world.



ARCHITECTURE AND MALAYSIA STUDY PROGRAMME

(2 WEEKS)

Students will study about Malaysia's distinctive architecture as well as Malaysian culture. The students may become acquainted with the distinctive architecture as well as the rich culture that Malaysia has to offer.



TROPICAL DATA SCIENCE SCHOOL

(2 WEEKS)

Through this programme, students will be able to comprehend the data science workflow, the variety of roles within data science, and the application of data science to real-world scenarios. Students will also learn about the various different cultures in Malaysia via the cuisine and dress, among other things.



INTERNATIONAL MOBILITY & COLLABORATION CENTRE

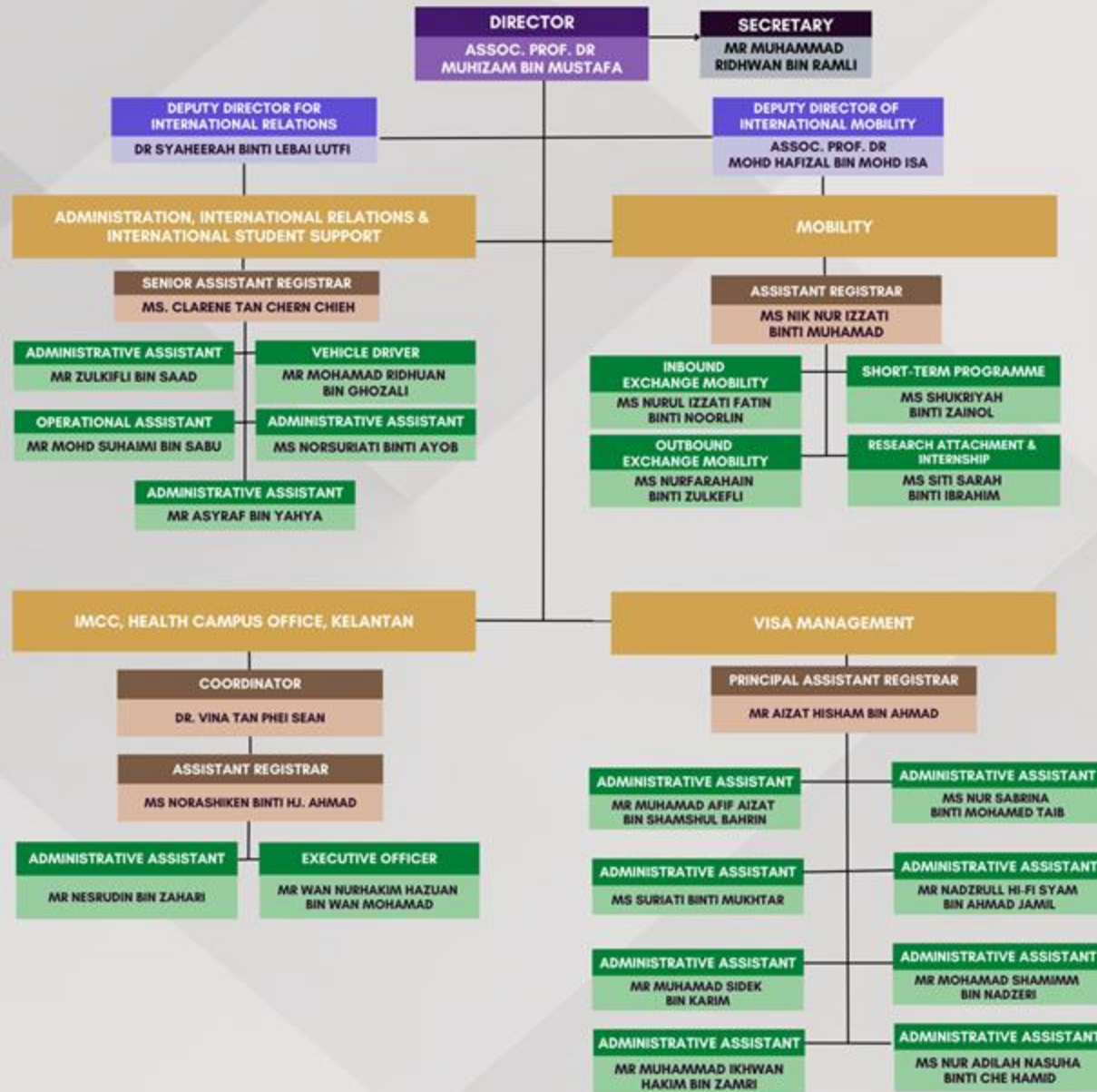
IMCC

International Mobility & Collaboration Centre (IMCC) was previously known as the USM International Office. IMCC is the platform for USM international students to pursue quality higher education through various mobility programmes. Through these programmes, USM students will be able to compete in the global market and stand shoulder to shoulder as the future global human resource through various programmes at home and abroad. We would like to welcome students to join the programmes and experience living in Malaysia, a diverse country that is rich in cultures and a great hub for travelling to other South East Asian countries.

The student exchange and study abroad programmes provide students the opportunity to study for one or two semesters. USM is a leading university which allows you to experience first class education in a great location and discover a nation known throughout the world as being 'Truly Asia'.



INTERNATIONAL MOBILITY & COLLABORATION CENTRE TEAM



CONTACT US



ADDRESS :

USM INTERNATIONAL MOBILITY & COLLABORATION CENTRE (USM - IMCC). BUILDING C09, UNIVERSITI SAINS MALAYSIA, 11800 PENANG, MALAYSIA



EMAIL ADDRESS :

dir_imcc@usm.my



FAX:

+604 653 2781



TELEPHONE NUMBERS: :

GENERAL INFORMATION :

+604 653 2780 / +604 653 2770

ADMINISTRATION, INTERNATIONAL RELATIONS
& INTERNATIONAL STUDENT SUPPORT :

+604 653 2779

VISA MATTERS:

+604 653 2492 / +604 653 2493

MOBILITY PROGRAMMES :

+604 653 3848 / +604 553 2346 / +604 653 3907



VISIT US AT :

[HTTP://IMCC.USM.MY](http://IMCC.USM.MY)

